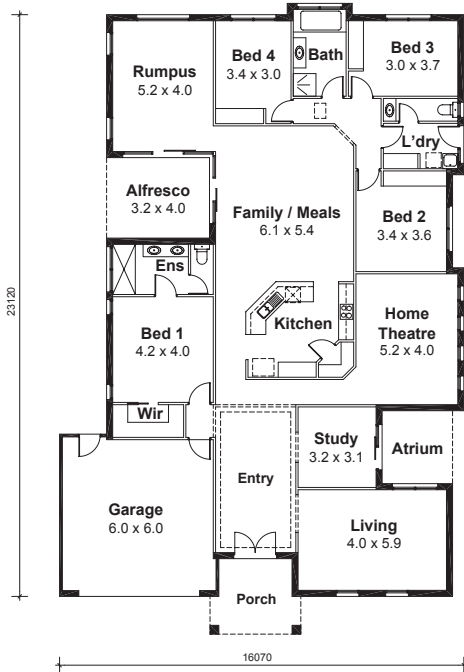


Sandhurst 300E



Photos are for illustration purposes only

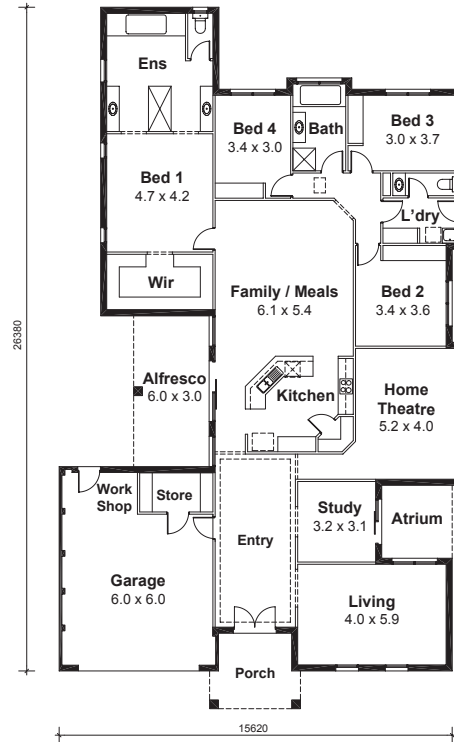
The Sandhurst 300E is an impressive design which has been created to cater the needs of a growing family. With a long list of striking features the Sandhurst is sure to impress everyone. The standout feature of this design is most certainly its focus on entertainment and indoor/outdoor living. There is an impressive home theatre room, which has been secluded from the primary living areas, perfect for entertaining family or guests. In addition, four living areas comprising a family/meals area, rumpus room, sitting room and alfresco area along with a modern kitchen allow ample space for indoor/outdoor living and dining. With four spacious bedrooms, the main with its own walk in robe and ensuite, and a study with access to the atrium the value and detail that comes standard with the Sandhurst is sure to delight.



Sandhurst 300E

Area: 272 m² (excludes garage and alfresco)

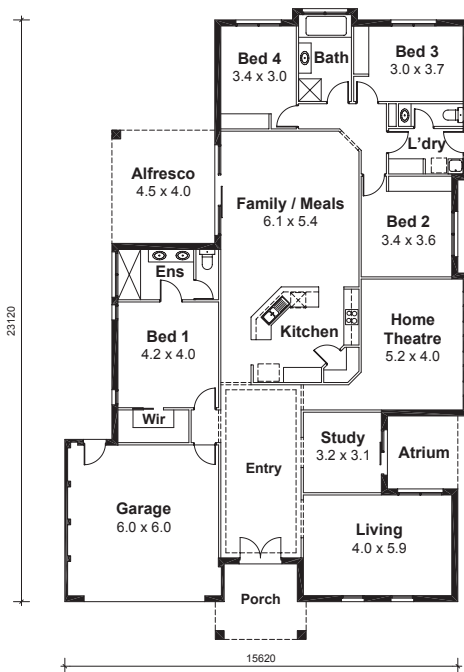
© National Builders Group



Sandhurst 290E

Area: 270 m² (excludes garage and alfresco)

© National Builders Group



Sandhurst 270E

Area: 249 m² (excludes garage and alfresco)

© National Builders Group

Yes!

We can change our plans to suit your needs.